

General information

Product name	L-BOXX 136
Item no.	6100000306
GTIN/EAN	4045294844561
Customs tariff no.	39231090
Country of origin	Germany

Product image



Characteristics

TSSPCGEWIEHISTPEWXMGSSVCGPIEVWXSVEKIERHTVXSIGXMSRHHVMRKXVERWTSVX

Unique mobility system

Patented click connection

Modular interior

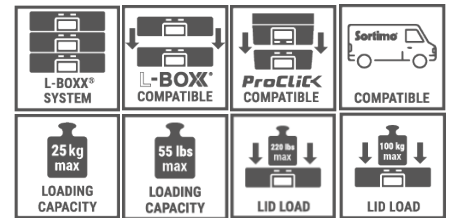
Organized storage

Safe transport

Integration into the in-vehicle equipment systems of renowned manufacturers



Revision 0.0_Monat_Jahr_DE

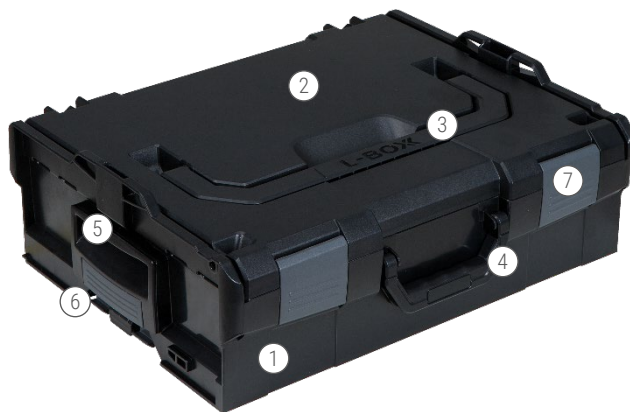


Colour / Material

Colour RAL 9017 traffic black
RAL 7016 anthracit grey

Material

- L-BOXX Acrylnitrile butadiene styrene
 - Front handle Acrylnitrile butadiene styrene
 - Top handle Acrylnitrile butadiene styrene
 - Grip handle Acrylnitrile butadiene styrene
-
- Coupling latches Polyamide
 - Locking latches Polyamide



- 1 Body
- 2 Lid
- 3 Top handle
- 4 Front handle
- 5 Grip handle
- 6 Coupling latches
- 7 Locking latches

Technical data

External dimensions

Width	445 mm	17.5"
Depth	358 mm	14.1"
Height	152 mm	6.0"

Internal dimensions

Width	378 mm	14.9"
Depth	310 mm	12.2"
Height	101 mm	4.0"

Volume	13 l	3.4 gal
Weight	2,2 kg	4.9 lbs

Load capacity lid up to	100 kg	220 lbs
-------------------------	--------	---------

Loading capacity max.	25 kg	55 lbs
-----------------------	-------	--------

Load capacity front handle	25 kg	55 lbs
----------------------------	-------	--------

Load capacity top handle	40 kg	88 lbs
--------------------------	-------	--------

Splash-proof	yes
--------------	-----

Temperature range in °C	-20°C till +80°C
-------------------------	------------------

Temperature range in °F	-4°F till +176°F
-------------------------	------------------

Compatible with	<ul style="list-style-type: none"> ▪ L-BOXX System ▪ ProClick Tool Bag M ▪ ProClick Soft Bag M
-----------------	---

Certificates	REACH-(EG 1907/2006)
--------------	----------------------